

# The National Park Service

There are 59 areas recognized today as United States National Parks. The first, Yellowstone, was established in 1872. In 1916, the U.S. National Park Service ([www.nps.gov](http://www.nps.gov)) was



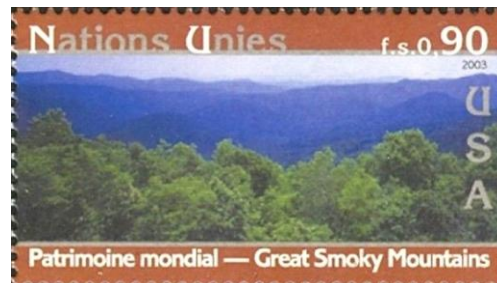
created to manage the increasing number. National parks were first shown on U.S. stamps in 1934 in a series of ten designs, the highest at 10 cents showing the Great Smoky Mountains National Park established that year.

Since then, the Great Smoky Mountains National Park has been featured on a postal card (15c - 1989) and an air mail stamp (2006).



In 2003, the United Nations recognized the park as a World Heritage Site, and issued a stamp

commemorating that international status.



Other categories of National Parks now exist, and the Shiloh (shown on stamps in 1962 and 1995) and Chattanooga-Chickamauga Civil War battlefields are National Military Parks.

Cumberland Gap is a National Historical Park, and last fall, Oak Ridge became the site of the Manhattan Project National Historical Park, shared with Los Alamos, NM and Hanford, WA.

This year's KnoxPEX postal cancel has images representing the Smoky Mountains and our other Tennessee National Parks.

## KnoxPEX 2016 Exhibits – don't forget to vote for your favorite!

"KPS Then and Now"

\*"Wartime France"

\*"A Visit to the Philatelic Truck"

\*"Collecting the Civil War"

\*"Remember Ellsworth"

\*"Gems and Gemstones"

\*\*"Baltic Sea Four Country Issue of 1992"

Tom Broadhead

Bob Ceo

Art Cole

Mike Downs

Richard Jackson

Steve Stow

Dave Warfel

\* Eligible for Most Popular Exhibit award.

## KnoxPEX 2016 Schedule

Saturday, March 5

10:00 am – show opens

door prize drawings all day

5:00 pm – show closes

6:00 pm – live auction

Introduction of special guests

Scott English, Executive Director, APS

Vera Felts, Executive Director, ATA

Sunday, March 6

10:00 am – show opens

door prize drawings all day

3:00 pm – show closes

## KnoxPEX 2016 Committee

Bob Smith – Show Chair

Tom Ringenbach - Exhibits

Thomas Lane – Bourse, Facilities

Randy Haese – Beginner Activities

Pat Goebel – Registration

Ralph Dinwiddie – Show Cachet, Cancel

Stu Hanlein – Auction

Gerald Schroedl – Auction catalog

Tom Broadhead – Publicity, Program

KPS is a chapter member of the

following philatelic organizations.

Learn more at their web sites.

*American Philatelic Society* –

<http://stamps.org>

*American Topical Association* –

<http://americantopicalassn.org>

*American First Day Cover Society* –

[www.afdcs.org](http://www.afdcs.org)

*Southeast Federation of Stamp Clubs* –

<http://sefsc.com>

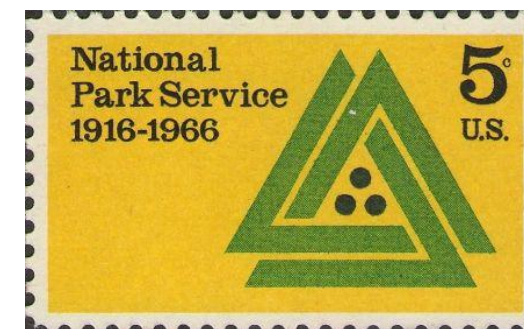
The Knoxville Philatelic Society  
presents

# KnoxPEX 2016

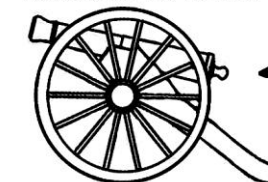
Honoring the 100<sup>th</sup> Anniversary  
of the

National Park Service  
and a Commemoration  
of Tennessee's  
National Parks

March 5-6, 2016



March 5, 2016  
KnoxPEX Sta.  
Knoxville TN 37923



Conserving  
Our National  
Heritage

**KnoxPEX** is the annual show of the Knoxville Philatelic Society (KPS), a member society of the American Philatelic Society and the Southeast Federation of Stamp Clubs. Now in its 34<sup>rd</sup> year, KPS is pleased to bring to East Tennessee a showcase of stamp dealers, exhibits, and activities that promote one of the world's greatest hobbies.

Each spring, **KnoxPEX** features a theme that highlights the ways in which postage stamps and their uses have illustrated important historical events.

We hope that you will take the time to learn more about KPS and the many benefits it offers to its members. Annual dues are \$15.00, and a special discount rate for the remainder of 2016 is available to **new members** at today's show for only \$10.00.

KPS members may attend our monthly meetings, 5<sup>th</sup> Tuesday and Saturday swaps, receive our award-winning monthly newsletter in a full color cachet envelope, buy stamps from the club's stock, and sell stamps in our live auctions.

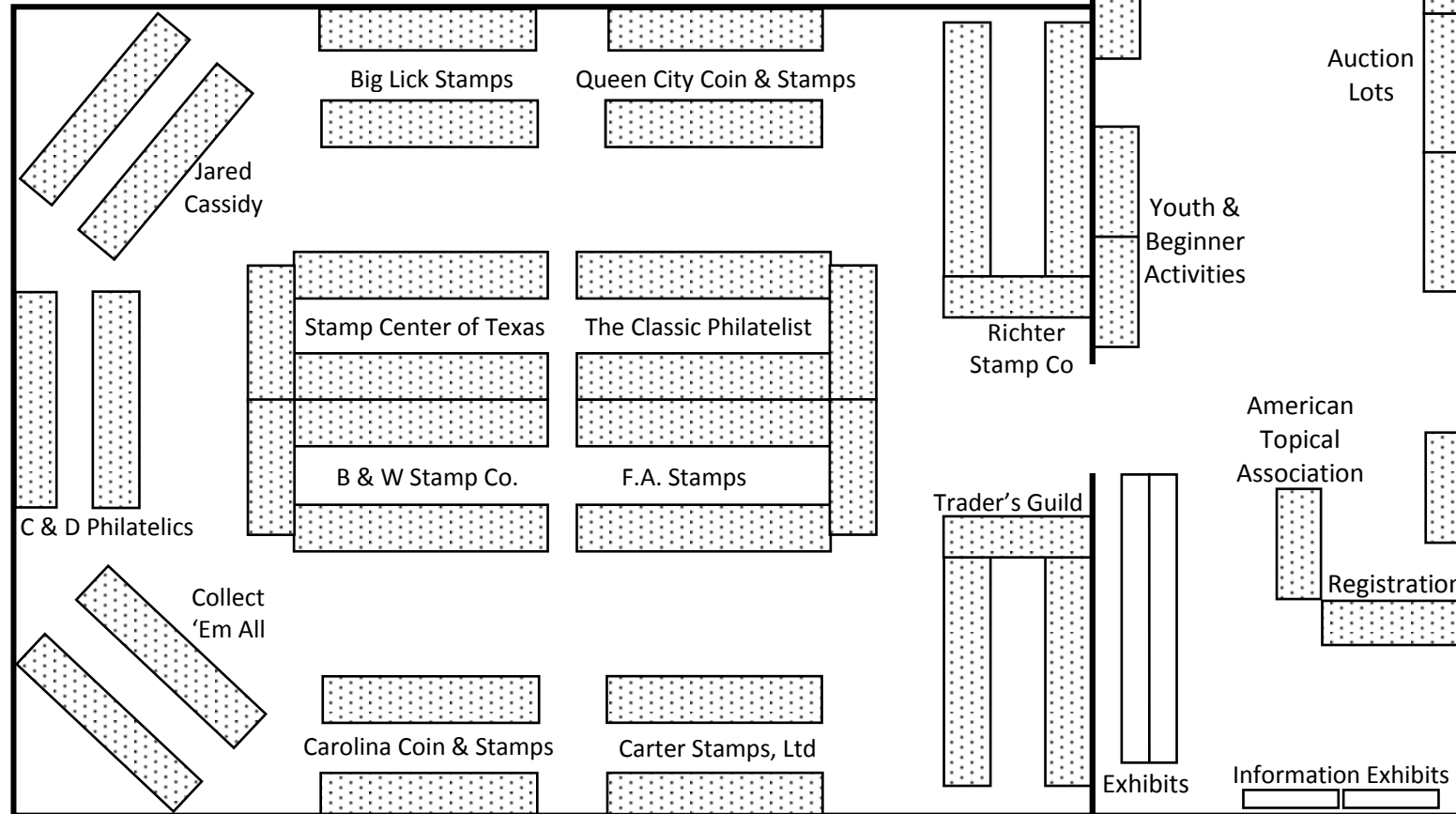
Visit us on the web at

[www.sefsc.org](http://www.sefsc.org)

[www.virtualstampclub.com](http://www.virtualstampclub.com)

# Welcome to **KnoxPEX 2016**

## Celebrating the 100<sup>th</sup> Anniversary of The U.S. National Park Service



### **KnoxPEX 2016 Dealers**

**B & W Stamp Co.**  
Bill Vance

**Big Lick Stamps**  
Gary Cochran

**C & D Philatelics**  
Charles R Hamilton

**Carolina Coin & Stamps**  
Tony Crumbly

**Carter Stamps, Ltd**  
Dean Carter

**The Classic Philatelist**  
Warren Manning

**Collect 'Em All**  
Len Curtis

**F.A. Stamps**  
Fred Brafford

**Jared Cassidy**  
Jared Cassidy

**Queen City Coin & Stamps**  
Louise Chouinard

**Richter Stamp Co.**  
Don Richter

**Stamp Center of Texas**  
Kurt Harding

**Trader's Guild**  
Heinrich Hahn

**KPS meetings** are the 1<sup>st</sup> and 5<sup>th</sup> Tuesdays of the month at the Tennessee Valley Unitarian Universalist Church, 2931 Kingston Pike, Knoxville, TN 37919. Meetings begin at 7:00 pm. The KPS Executive Board meets at 6:00 on selected Tuesdays.

**KPS Officers:** Barbara Steverson, President; Tom Ringenbach, Past President; Dave Anderson, Vice President; Thomas Lane, Treasurer; John Smartt, Secretary; Mike Downs, Randy Haese, Bob Smith, Dave Warfel, Directors; Jim Pettway, APS Representative.